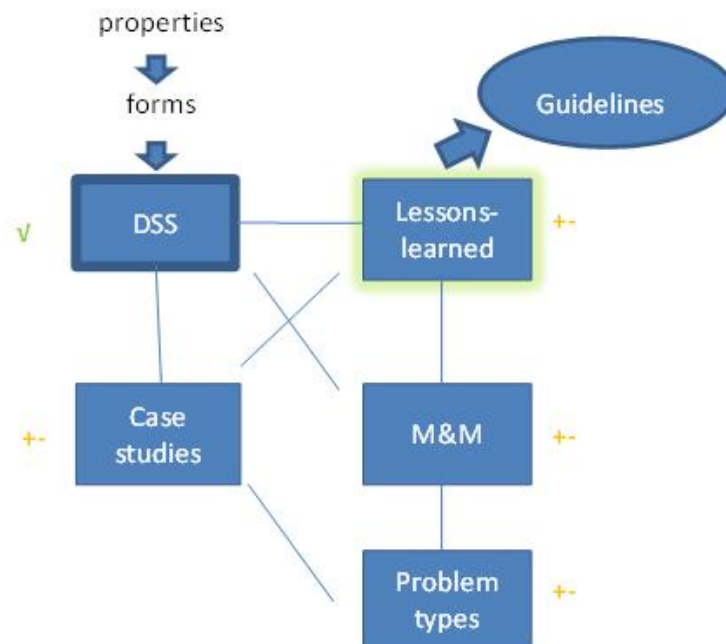


## Main conclusions from the 2<sup>nd</sup> WIKI TASK FORCE MEETING

3-4 Sept, 2012 Porto

Participants: Ola Eriksson, Alexandra Marques, Jussi Rasinmäki, Amy Stewart, Christian Rosset, Tomas Lämås, Sean Gordon, Duncan Ray (remote), Stephen Bathgate (remote), Harald Vacik (remote), Sylvana Nobre (remote)

### GENERAL CONCEPTS OVERVIEW:



### WORKING WITH SEMANTIC WIKI FORMS

Jussi gave a presentation on how to work with semantic wiki forms.

Information is generally added to the semantic wiki through the use of data entry forms, which present all the properties belonging to the specific type of data object (DSS, Case Study, Lesson, etc.). These property values should replace the use of all traditional wiki categories, except the name of the data type (DSS, Case Study, etc).

#### FILLING IN FORMS

- Links to the forms will be given in the relevant sections of the wiki (DSS descriptions, Case Studies, etc.); alternatively all forms can be accessed via Special Pages accessed using the the leftside wiki navigation menu
  - To edit using a form the user needs to be logged in to the wiki
  - When logged in, the **edit with form** tab is available towards the top of the page: edit the content using pre-determined values of the properties and then save the page.
  - There are properties that are mandatory. When they are not filled it generates an error (small red text next to the item) and the page cannot be saved.
  - Fix the errors and then save.

- Alternatively, can use **edit** to directly change the wiki markup, but the pre-determined values of the properties are not available. You can save it but when the form is displayed it gives an warning if the text does not match a pre-determined value. When you open the form in the **edit form** the invalid value will disappear.

#### CREATING FORMS

- The entire form structure is generated with a script from a Google Docs shared document **forsys\_semantic\_wiki\_properties**
- Alternatively, in the wiki there is a page to view/edit each property (Special Pages>List of pages>Properties). We do not recommend the use of this page in the time being, but after the form is in use this will be the only way to edit properties.

#### ADDING PROPERTIES, PROPERTY VALUES, AND TOOLTIPS

- **New properties** concerning DSS descriptions should be added to the **forsys\_semantic\_wiki\_properties** google doc, and the script needs to be re-run to update the wiki form; now will be able to edit properties (values, descriptions) on the wiki using the property definition pages
- **For properties based on a pre-defined list, new values** should also be added to the google doc and the form regenerated using the script
- New properties related with any other form ma be added using the Properties page.
- If there is a mistake, it seems like the wiki platform has a way **to reset the wiki to a previously saved version**.
- The user wanting to **delete properties or values** should first check in the property page if there are data objects using that property. If yes, it should not delete it because if would make the DSS form inconsistent -> a warning system could help.
- **My watchlist** can help in a warning system but this needs more investigation.

## DSS DESCRIPTIONS

DSS descriptions are now in 2 formats: semantic and non-semantic -> The non-semantic will be removed; future work will focus only in the semantic forms. The DSS semantic form is available at view form [LINK].

#### FROM NON-SEMANTIC TO SEMANTIC

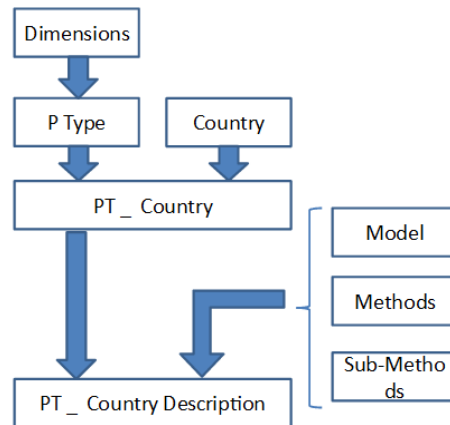
- Ask the responsible for the country to migrate the DSS to the semantic wiki, instruct them to follow the instructions at: [http://fp0804.emu.ee/wiki/index.php/DSS\\_description\\_Handbook#How\\_to\\_migrate\\_a\\_non-semantic\\_DSS\\_description\\_page](http://fp0804.emu.ee/wiki/index.php/DSS_description_Handbook#How_to_migrate_a_non-semantic_DSS_description_page)

## COUNTRY REPORTS

Sylvana gave a presentation [[Copy of CRinWiki TG3](#)] of the work done by analysing Country Reports in depth and filling up a newly developed data base. Each country-problem type combination has been extracted and linked to the decision problem, models, methods and the DSS used.

- Linking Problem type and country is done
- Ongoing work in linking those two concepts to models, methods and sub-methods
  - This should be coordinated with WG2's work on models & methods
  - Sylvana's use of "model" was referring to forest management objectives and so should probably be renamed to prevent confusion with the WG2 use of model

- Information in the database will need to be transferred to the semantic wiki. Jussi will work on this together with Silvana



## MODELS & METHODS

- Duncan, Stephan, and Maria? Have extracted the models & methods mentioned in country reports to a database
- They have also finalized a semantic model template form
- Sub-methods is a collection of existing properties for DSS description: MCDM methods, Optimisation algorithm, Uncertainty evaluation, perhaps also "Forest models" with expanded set of values. This category that can be used in other pages
- Needs to populate the Models and methods repository. How?
- Distinction among model and method may not be clear for all the members

## LESSONS-LEARNED

Sean gave a presentation [[Copy of Lessons Learned TG2](#)] on progress in structuring the lessons learned and guidelines. There are still a number of unresolved issues, but the group made a number of provisional decisions that will allow us to test an approach (and then refine it as needed).

We have some data sources for lessons now: the empirical survey, a few case studies, and the literature in general. Lessons might also be drawn from DSS descriptions, country studies, [others?].

Here is a summary of the main issues discussed and decisions:

Data types: Lessons are definitely a data object type, but are Guidelines (aka Topics, groups of lessons) also a data type (which would allow associated properties, e.g. description, comments, etc) or just a categorization scheme (property)?

- Decision: No apparent need for Guidelines/Topics to have their own properties, so they will just be setup as a property

Lesson formulation: When users enter lessons, should we encourage them to check the existing list ("shared lessons") or just allow them to enter each lesson in a unique manner?

- Decision: we will try to implement a hybrid approach, which would enable people choose from a list or just enter lessons as they please.
  - This will probably require some type of hierarchical lessons browsing capability

Lesson categorization: there are a number of ways we could categorize the lessons to improve searching and browsing.

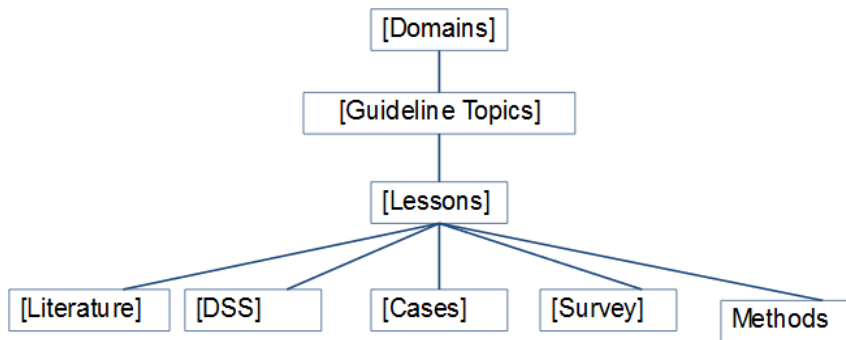
- We could use the 2-level categorization system created for the expert survey, where lessons grouped into Guidelines and then further into Domains.
  - Pro: classification already exists and probably could be imported quickly
  - Con: would require creating 2 new properties that are not linked to other data objects and are somewhat redundant with existing properties (e.g. Domain[System design and development] ~ Development stage[Development])
  - Con: These categories were designed for the survey responses received and are much more complete for Development issues than for other Forsys themes.
- Sean proposed using existing properties, adding new values as necessary (e.g. Domain[Project management] = Development stage [add "Project organisation"]).
  - Pro: more consistent with (and searchable across) other data types through shared properties.
  - Con: concepts will be spread across multiple properties (e.g. DevelopmentStage, KnowledgeMgt, M&M)Decision: Modify survey Domains following Christians suggestion; review Guidelines to see if they make an adequate second level of classification.
- Christian proposed substituting the DSS description template categories of information for the expert survey Domains (as much as possible) in order to increase consistency between these objects.

Domains	WG	
Name, responsible organisation and contact person		
Scope of the tool (functional description)		
Concrete application (education, research project, real-life applications)		
Installation and support (accessibility, IT requirement, demo, price if commercial product, ...)	WG1	
Data, data model and data management	WG1	
Models and methods, MBMS, decision support techniques	WG2	
Support of knowledge management process	WG3	
Support of social participation	WG4	
User interface and outputs	WG1	
System design and development	WG1	
Technological architecture, integration with other systems	WG1	
Ongoing development		
Documentation: main references, internet, ...		

- Sean proposes a further hybrid approach: use the DSS description template categories as a Domain property values and also use the related WG thematic properties (M&M, KnowledgeMgt, SocialParticipation properties) as much as possible

Another question is whether the 2 levels should be hierarchically linked

- No decision was reached; it depends on what we choose for Guidelines/Topics
- Pro: linked hierarchy would be easier to navigate, especially as the number of Topics increases
- Con: more difficult to setup technically; maybe one would have to be a property of the other?
- Unknown: could topics be shared between Domains?

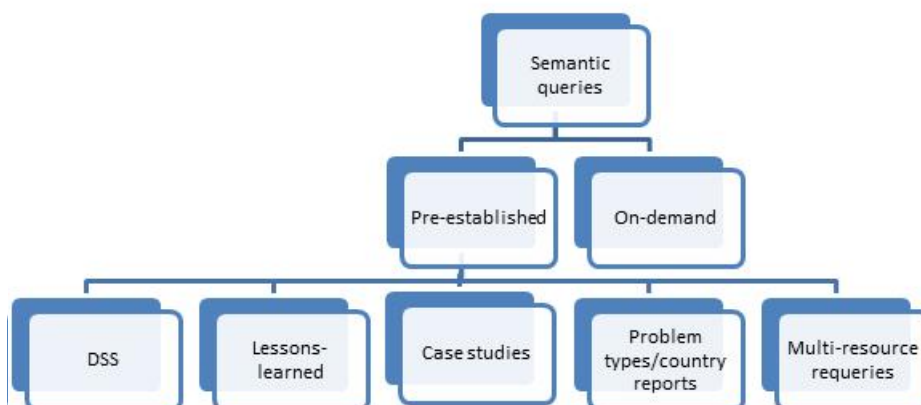


- The user may add a new domains using the property page, but there should not be much need for that because the terms are quite general and the list is already quite comprehensive.
- If a Subtopic property is used, there will likely be more additions needed; Harald predicted these may be rather unique/diverse because they will describe a variety processes
- Can be interesting to add a FAQ (perhaps based on user types) to help users to find the lessons-learned that the user is particularly interested in.
- How to proceed with data gathering:
  1. Assign the domains & topics to each lessons-learned
  2. Upload the empirical survey data to the lessons-learned semantic wiki form

## SEMANTIC QUERIES:

Alexandra and Jussi introduced this theme in a presentation [[Queries\\_TG1](#)].

- The semantic query form doesn't provide any help to users and requires a high level of knowledge to use, so we will build a number of predefined queries to address what we believe may be common user needs
- Pre-existing interesting queries: Dynamic pages showing the results
- Extensions for creating query forms so that the user can easy write his queries on-demand



## TECHNICALITIES BEHIND LINKING CONCEPTS

- **The same property can be used in several forms.** To know where the property is used go to Special Pages>List of pages>Properties and select the name of the property. There will be a list of all pages where it is used. There is no way to know the type of

- page there.... Probably we can add the data type categories to the output
- A form may be connected to other categories forms. For example: Case study has a category called **Uses DSS** in there is a updated list of all the DSS forms filled up.
  - Once this connection is done, the reverse Ask-query may also be implemented (e.g. [[Uses DSS::<name of the DSS of interest]])

### **Life after the COST Action:**

Tomas resented a proposal [[CoP TG4](#)]for establishing the FORSYS Community of practice (CoP): platform for work and communication; taking advantage of the forsys wiki

- The thematic group will further specify the idea to be presented to all the FORSYS members and discussed in a future meeting.
- The group will setup a wiki or google space to share ideas and examples

## Work Plan

Task	Responsible	Deadline
Remove all categories that are in non-semantic forms	Ola	04 Sep.
Country responsible person should organize the transfer from the non-semantic to the semantic DSS form	Christian	07 Sep.
DSS classification in the CR-> Semantic form	Christian	07 Sep.
Define domains and guideline topics	Sean and Christian	04 Sep.
Lessons-learned from the empirical survey ->wiki + classified according to domains	Sean and Jussi	04 Sep.
Existing Case studies ->wiki template	Sean	?
Lessons-learned from British DSS study -> wiki	Amy, Sean, Jussi	30 Sep
Linking resources DSS-LL-CS->Query	Sean and Jussi	?
Improve error identification in the edit with form: bold; listed at the beginning of the page	Christian/Dominique	
CR->Wiki	Jussi and Silvana	30 Nov.
Update Models and methods list with the sheet from Ola	Ola, Duncan, Stephen	07 Sep.
Harmonize Models and methods list with the work of Silvana	Duncan and Silvana	?
Google docs organization	Sean and Christian	04 Sep.
Google Docs for wider distribution or permanent archiving ->Wiki	Sean and Christian	30 Sep.
CoP further specification	Thomas	?
FAQ page in the wiki for Pre-established queries	Jussi	07 Sep.
Create FAQ questions	WG leads organize? Harald, Amy, Sean, others for LL?	
Add existing queries to the wiki and send e-mail requesting participation of Forsys members	Alexandra	07 Sep.
Inform ForSys members about the workshop	Alexandra	07 Sep.