

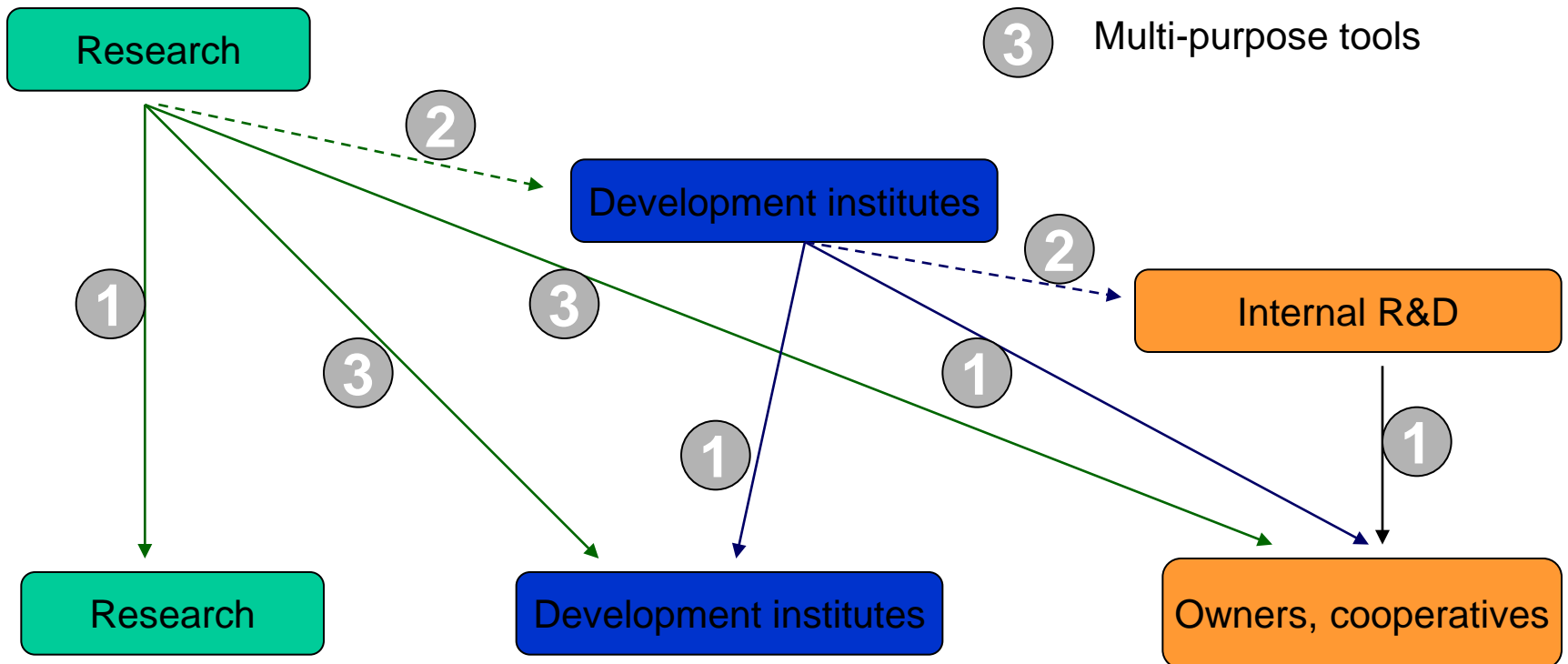


Development of DSS in France

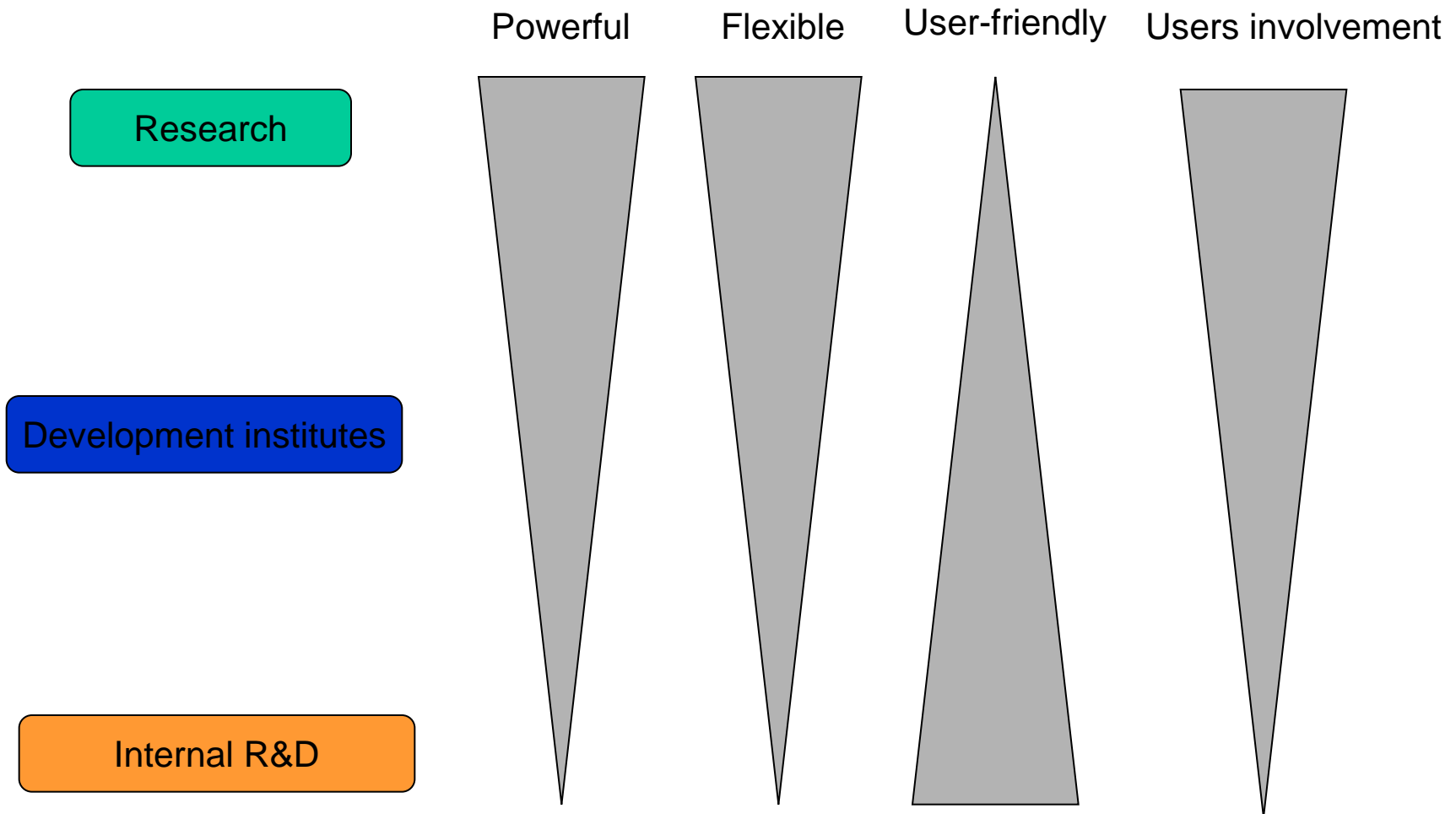
Development organization

Dss conception

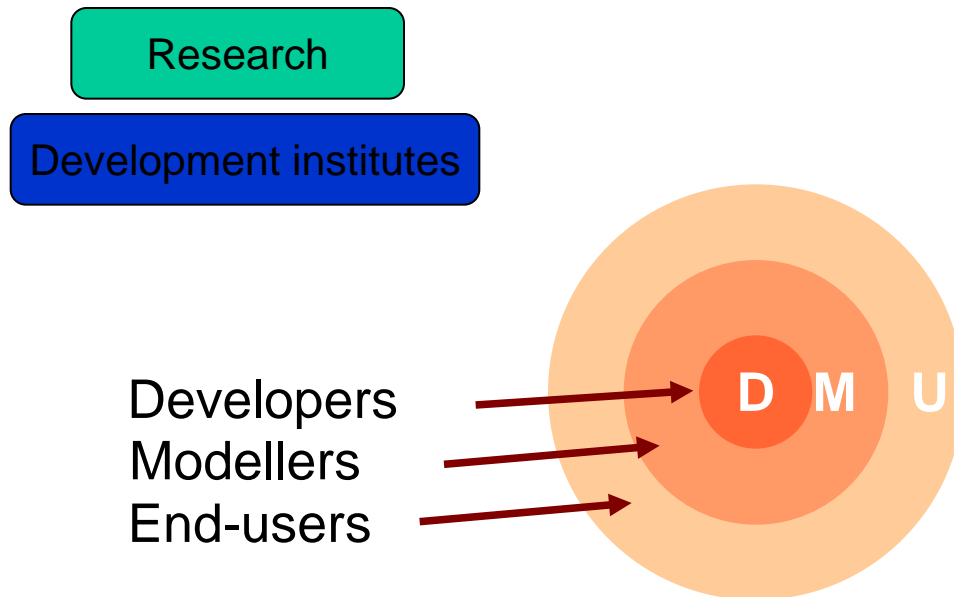
- ① Direct development
- ② Scientific to technical transfer
- ③ Multi-purpose tools



Development organization



Development organization



Actors' roles:

Developers: computer developers - design, training courses, assistance

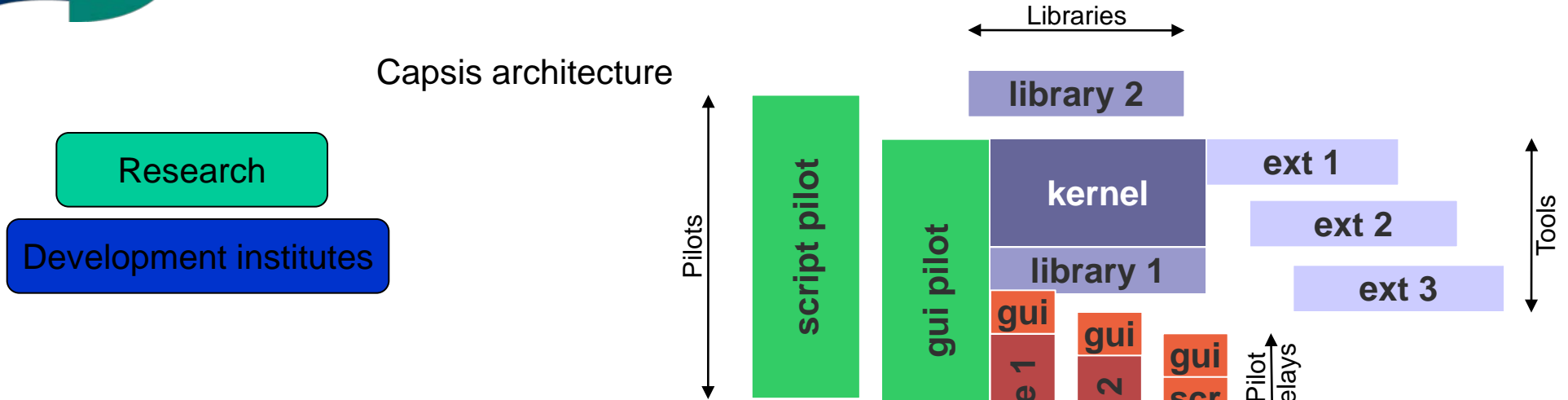
Modellers: scientists - build their models inside Capsis

End-users: interested by using the models

The Capsis Community:

Developers + Modellers are co-developing together

Development organization



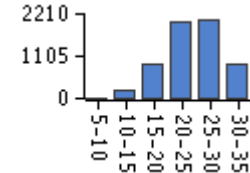
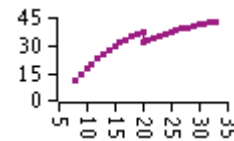
Kernel: stability

Libraries: additional tools

Modules: growth models

Extensions: evolutive part

Pilots: interactive or not



Research

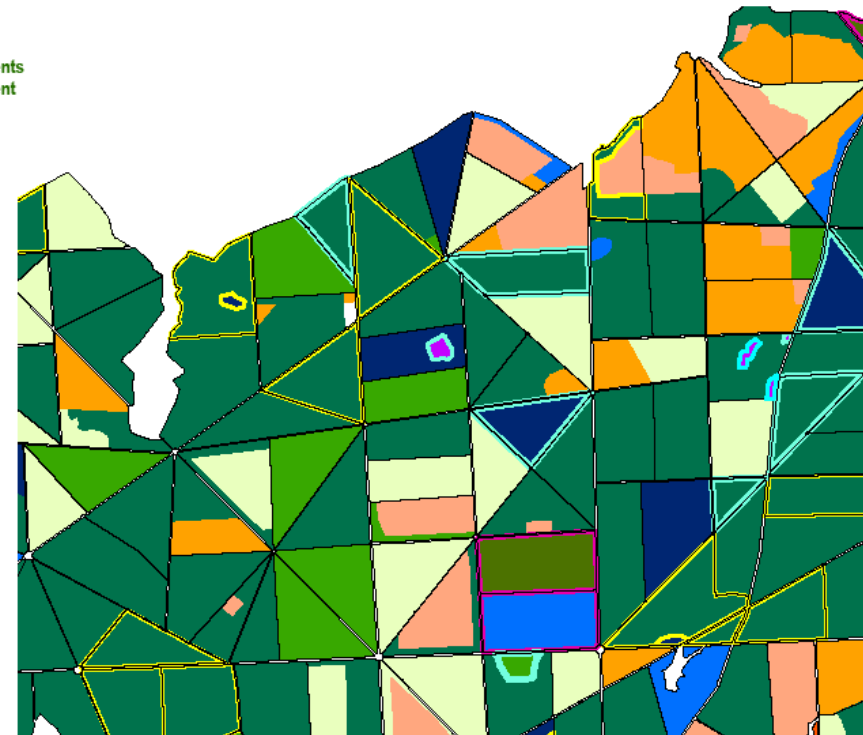
Development institutes

Capsis IT environment : Java

Nowadays : mainly stand alone application

Development of connections with data base or SIG

FD D'ORLEAN
MASSIF D'INGRANNES
Cartes des types de peuplements
Données début d'aménagement
2007-2027)
Echelle : 1:25 000



Research

Development institutes

Internal R&D

Other DSS : Java, Delphi

Mainly stand alone application

Connections with data base or SIG

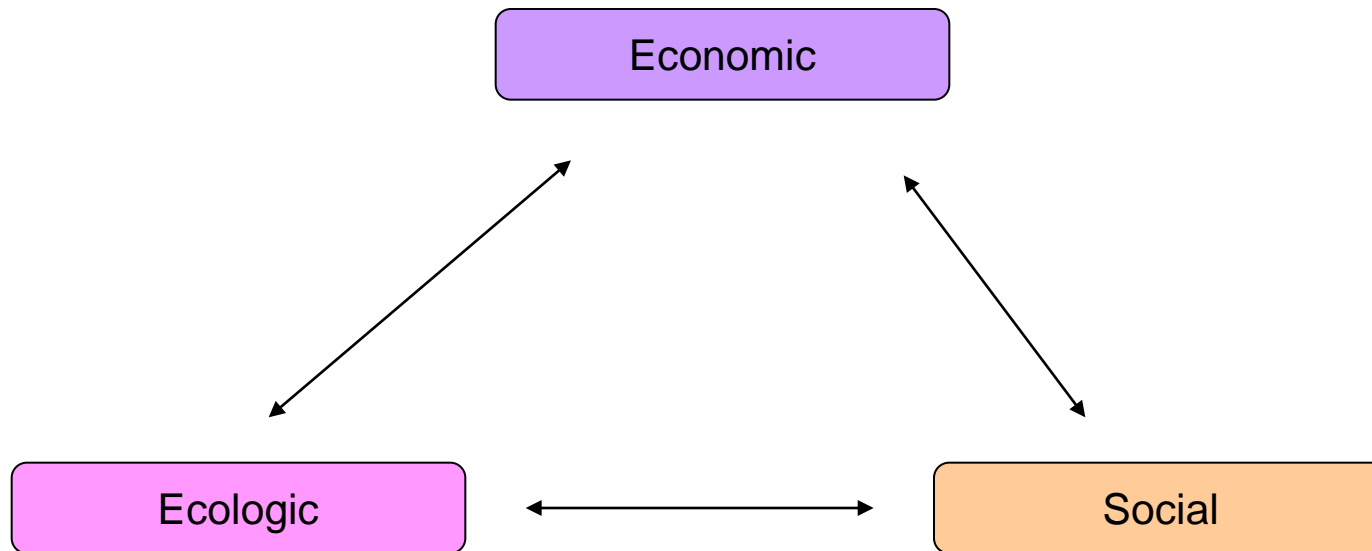
Transfer to potential users

- Publications
- Training sessions



DSS and sustainable forest management

Sustainable management :



DSS and sustainable forest management

Economic

Tools to calculate economical indicators

Ecologic

Tools to calculate CO₂, nutrients balance, water consumption

Social

Tools to calculate employment

But more indicator have still to be defined and calculated (social function of the forest, biodiversity,...).

Multicriteria analysis have still to be done.